

QUICK START GUIDE

MediaStar Single 769 1U Rack Mounting Kit Guide



The MediaStar 769 chassis holds a single MediaStar 'blade' processor module. The chassis can be used in a standalone manner or it can be mounted in 1U of a 19" rack, when fitted with appropriate mounting brackets.

These instructions tell you how to fit the single chassis mounting brackets to a 769 chassis and then fit the assembly in a 19" rack.

It is assumed that the customer already has the 769 chassis and the required processor module ('blade').

What's in the box:

- 2 1U rack mounting brackets
- 6 M3 countersunk screws
- Rack mounting screw set

Installation

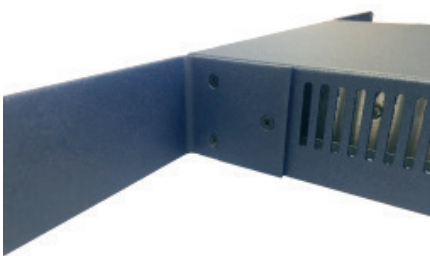
You must ensure that the completed rack installation of the 769 chassis conforms to the full installation requirements described in the 200-2326 769 Chassis Installation Guide. A copy of this can be found on the www.cabletime.com website.

The mains supply in the 19" rack must have an adequate capacity and a reliable protective earth connection. The mains power required for the 769 chassis can be found on the rear of the unit.

If there is any doubt whatsoever about these installation requirements, a qualified electrician must be consulted.

Fitting rack mounting brackets to the 769 chassis

1. Remove any existing mains cable or any other signal or network cables from the chassis.
2. Remove any rubber feet mounted on the bottom of the chassis.
3. Remove the cross-head screw closest to the front, on the side of the chassis.
4. Fit the mounting 'Ear' to the side of the chassis using the 3 countersunk screws provided.



5. Fit the second mounting bracket on the other side of the chassis as described.



Mounting the 769 assembly in a 19" rack

1. All MediaStar equipment has a maximum ambient operating temperature of 40°C. When mounting inside an enclosed 19" rack, ensure there is sufficient ventilation airflow to keep MediaStar equipment below its maximum operating temperature.

Ensure that the ventilation and fan grills in the sides, front and rear remain un-obstructed.

2. Use the mounting screws and cage nuts provided to fix the 769 assembly to the 19" rack rails in all four positions.
3. Connect the 769 unit to the mains with the IEC mains cable provided and reconnect any signal or network cables to the processor module ('blade').

On the front of the power supply module, a blue light should be visible through the fan aperture which indicates the PSU is working. If a red fault light is on, the DC voltage rails supplying the 'blade' module are outside their normal operating limits or the fan has failed or is running too slowly.

The fan should come on for ten seconds on power on, and then stop if the unit is cool. The fan won't run continuously unless the internal temperature of the chassis is high enough.

4. Ensure that your chosen 'blade' is configured correctly and is operating as expected.

Correct Disposal of this Product

This marking on the product, accessories or literature, indicates that the product and its electronic accessories should not be disposed of with other household waste at the end of its working life. To prevent possible harm to the environment or human health from uncontrolled waste disposal, please separate these items from other types of waste and recycle them responsibly to promote the sustainable reuse of material resources.



Whilst all reasonable care has been taken to ensure the accuracy of this publication, the publishers and authors cannot accept responsibility for any errors and omissions. Cabletime Limited reserves the right to revise this publication and to make changes in the content from time to time without notice.

Copyright © Cabletime 2017. All rights reserved. No part of this guide may be reproduced, stored in a retrieval system or transmitted in any form or by any means (electronic, mechanical, photocopying, recording or otherwise) without the prior written permission of Cabletime Ltd.

Head Office

Cabletime Ltd
64 Greenham Road
Newbury, Berkshire
RG14 7HX
United Kingdom

T: +44 1635 35111

E: sales@cabletime.com

www.cabletime.com

USA Office

Cabletime USA
100 Valley Road
Mt. Arlington
NJ 07856

T: 973 770 8070

E: usa@cabletime.com

Asia Office

Cabletime Asia
Room 2503, 25/F, Westin Centre
26 Hung To Road
Kwun Tong, Kowloon
Hong Kong

T: +852 3101 2650

E: asia@cabletime.com